

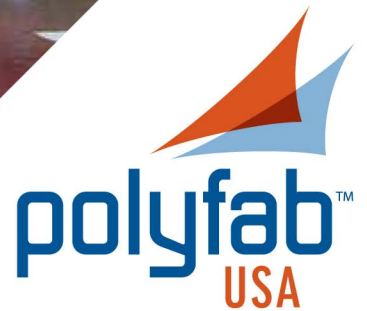
Comtex⁺ is engineered for medium to large shade structures and has a proven history of performance under harsh Australian elements.



COMTEX⁺

HEAVY DUTY KNITTED SHADECLOTH

*Protecting people
just like you*



www.PolyfabUSA.com

COMTEX+[®] HEAVY DUTY KNITTED SHADECLOTH

Comtex+ is ideal for medium to larger residential and commercial projects that require higher tensile loadings. Its 12.5 feet width helps eliminate seams.

Comtex+ offers excellent weight to strength ratios.

Comtex+ comes in an extensive range of 17 designer colors that will compliment any building exterior.

Comtex+ is made to the highest quality standards and is supported by a 12 year warranty (conditions apply).

Comtex+ provides maximum people protection against the sun's heat and strong Ultra Violet (UV) rays and utilizes the best UV stabilizers.

With heat-setting, the knitted fabric has better 'lay-flat'—less curling on the edges. Also, since the heating process takes out some of the shrinkage in the fabric, the stentered fabric will shrink less and have improved dimensional stability.

- ✓ High UVR Protection
- ✓ UV Stabilized
- ✓ Proven Performer
- ✓ Width eliminates excessive seams
- ✓ Fire Retardant
- ✓ Heat Set (NEW)
- ✓ New improved pigments*
- ✓ New 12 year warranty
- ✓ 3 New colors



*The new version of these colors have improved pigments that make them slightly more intense than the original color shades.

COLOR	COVER FACTOR	SHADE FACTOR	UVR BLOCK%	CALCULATED UVE%	PROTECTION CATEGORY	SRI
1. Paperbark (NEW)	93	83.4	92.6	92	Very effective	Not tested
2. Monument (NEW)	94	93.8	94.2	93	Very effective	Not tested
3. Smoke (NEW)	92	90.1	92.2	91	Very effective	Not tested
4. Black	95	95.4	95.6	94	Very effective	1
5. Silver	94	94.1	94.2	93	Very effective	18
6. Slate Gray	97	96.7	97.0	96	Most effective	Not tested
7. Navy Blue	97	95.8	97.1	96	Most effective	Not tested
8. Aquamarine	93	85.4	91.7	91	Very effective	31
9. Midnight Green	96	94.4	96.4	95	Most effective	Not tested
10. Sage	96	92.9	96.3	94	Very effective	17
11. Sandstone	96	88.0	96.2	95	Most effective	52
12. Cappuccino	95	89.5	95.6	93	Very effective	36
13. Porcelain	95	79.8	94.6	94	Very effective	87
14. White	96	77.4	96.2	96	Most effective	96
15. Rust	93	87.4	93.3	92	Very effective	33
16. Red	95	89.9	95.6	95	Most effective	64
17. Lemon	94	74.6	94.7	93	Very effective	79

Available sizes:

12.5 feet (width) x 33 yards (length)
center folded rolls

Average weight:

10 oz. per square yard

Ultraviolet Effectiveness (UVE) Classification System

UVE (%)	Protection category
80.0 to 90.9	Effective
91.0 to 94.9	Very effective
95.0+	Most effective

The information in this table represents the results sourced from third party testing authorities, and tolerances may vary by as much as 10%.



Photo courtesy of Moran Canvas

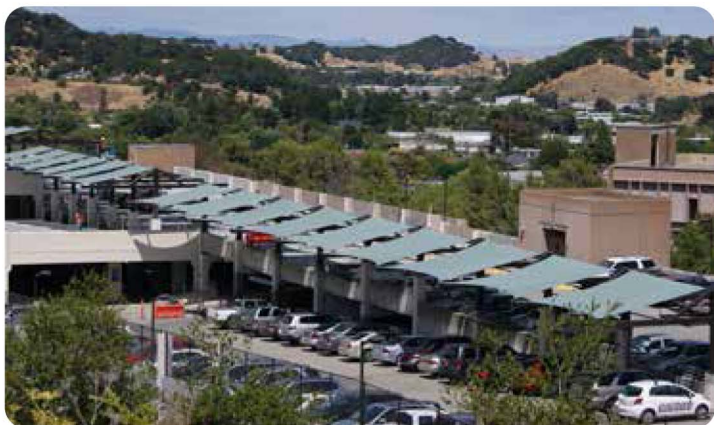


Photo courtesy of GH Bruce LLC

Product Disclaimers:

- The Manufacturer reserves the right to alter or modify product specifications and colors without notice, and assumes no obligation or liability for the suitability and use of its products other than those applications intended by the manufacturer.
- Colors shown may not be an exact representation of the actual product.
- Polyfab USA assumes no liability in the event of negligent installation /fabrication or application or choice of cloth.
- During installation, Polyfab shade cloth should not be subject to "pre-stressed" loading in excess of 20%.

- Outdoor fabrics are subject to harsh conditions and degradation over time is to be expected. Comtex+ is supported with a 12 year UV warranty. During this period the fabric will remain serviceable and fit for purpose. Color fading is normal over time. Colors containing red and yellow pigments have a tendency to fade more than others. This is not a loss of strength caused by UV breakdown and is not covered by the product warranty. For more details refer to the supporting Polyfab product warranty.

www.PolyfabUSA.com

COMTEX+ CAN BE PURCHASED FROM:

